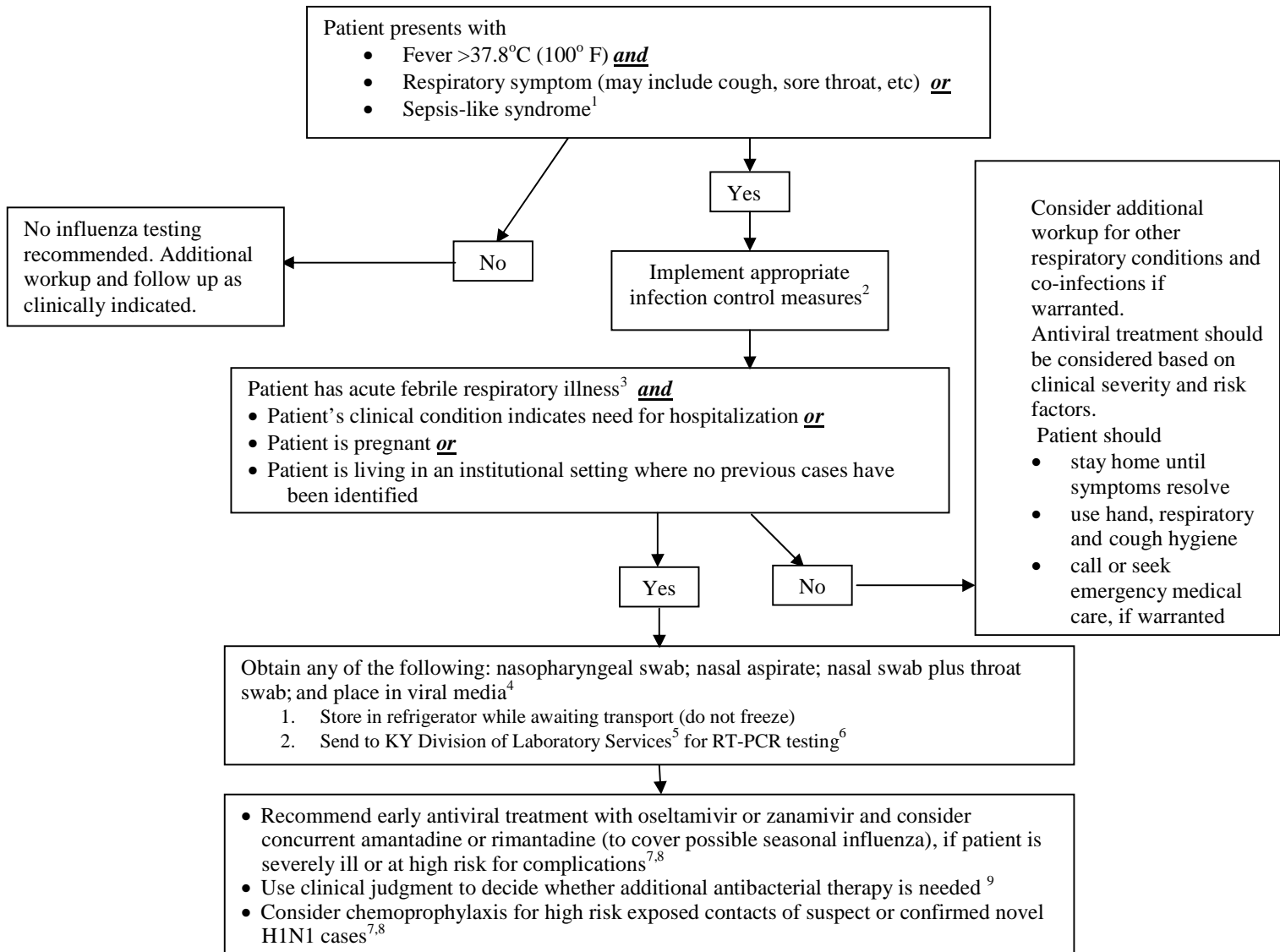




**CABINET FOR HEALTH AND FAMILY SERVICES  
DEPARTMENT FOR PUBLIC HEALTH**

**Updated interim algorithm for clinicians to assist in decisions on testing and treatment for novel H1N1 (swine flu) virus in Kentucky  
August 26, 2009**



1. As with seasonal influenza, infants, adults  $\geq 65$  years-old, and persons with compromised immune systems may have atypical presentations.  
2. Information on infection control can be found at: [http://www.cdc.gov/h1n1flu/guidelines\\_infection\\_control.htm](http://www.cdc.gov/h1n1flu/guidelines_infection_control.htm)  
3. If you encounter a patient that may have extenuating circumstances that warrant testing, please contact Emily Adkins, RN at 502-564-5353 during regular business hours. If the situation is urgent and outside of business hours, please call our after hours contact line at 888-9REPORT.  
4. See KY Division of Laboratory Services website: [www.chfs.ky.gov/dph/info/lab](http://www.chfs.ky.gov/dph/info/lab)  
5. KY Division of Laboratory Services: ATTN: Virology, 100 Sower Blvd. Frankfort, KY 40601  
6. Real-time polymerase chain reaction (RT-PCR) is the preferred laboratory test for identifying novel H1N1 (swine flu) virus. Rapid antigen tests and immunofluorescence tests have unknown sensitivity and specificity to detect novel H1N1 virus. For more information, please see <http://www.cdc.gov/h1n1flu/specimencollection.htm>.  
7. Persons at high risk of complications: Children less than 5 years old; persons aged 50 years or older; children and adolescents (aged 6 months–18 years) who are receiving long-term aspirin therapy and who might be at risk for experiencing Reye syndrome after influenza virus infection; pregnant women; adults and children who have chronic pulmonary, cardiovascular, hepatic, hematological, neurologic, neuromuscular, or metabolic disorders; adults and children who have immunosuppression (including immunosuppression caused by medications or by HIV); and residents of nursing homes and other chronic-care facilities.  
8. Information on use of antiviral agents can be found at: <http://www.cdc.gov/h1n1flu/recommendations.htm>  
9. Interim guidance for clinicians is available at: <http://www.cdc.gov/h1n1flu/clinicians/>  
**Please note:** this algorithm does *not* apply to providers participating in the US Outpatient Influenza-like Illness Surveillance Network (ILINet). For guidance related to ILI Net see: <http://www.cdc.gov/h1n1flu/screening.htm>